

LEECH CARBIDE

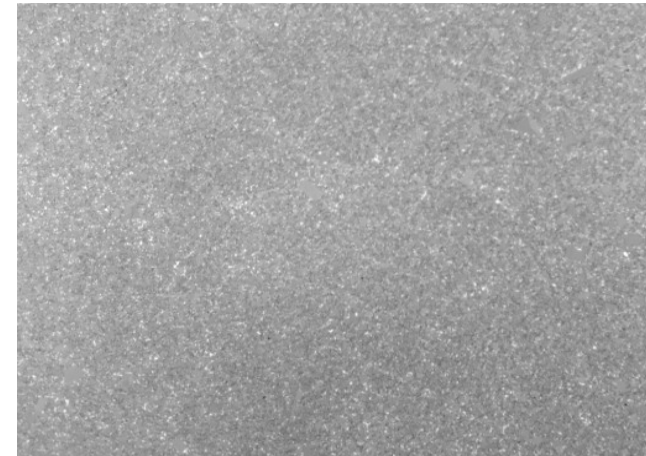
Creating and Manufacturing Excellence since 1965

LEECH CARBIDE

1085 Lamont Drive
Meadville, PA 16335 USA
Phone: (814) 724-5454
Toll Free: (800) 441-7385
Fax: (814) 724-5493
Website: <http://www.leechcarbide.com>

MATERIAL CERTIFICATION:

| | | |
|-----------------------------|--------|------|
| LEECH CARBIDE GRADE: | LC 106 | |
| % TUNGSTEN CARBIDE (WC) | 94.0% | |
| % COBALT | 6.0% | |
| AVERAGE GRAIN SIZE, MICRONS | 0.8 | FINE |
| ROCKWELL (A) | 92.7 | |
| DENSITY, g/cc | 14.94 | |
| T.R.S. | 483 | |



DANIEL T. LEECH, PRESIDENT